

## *Rosen Place on 8th Assisted Living...*

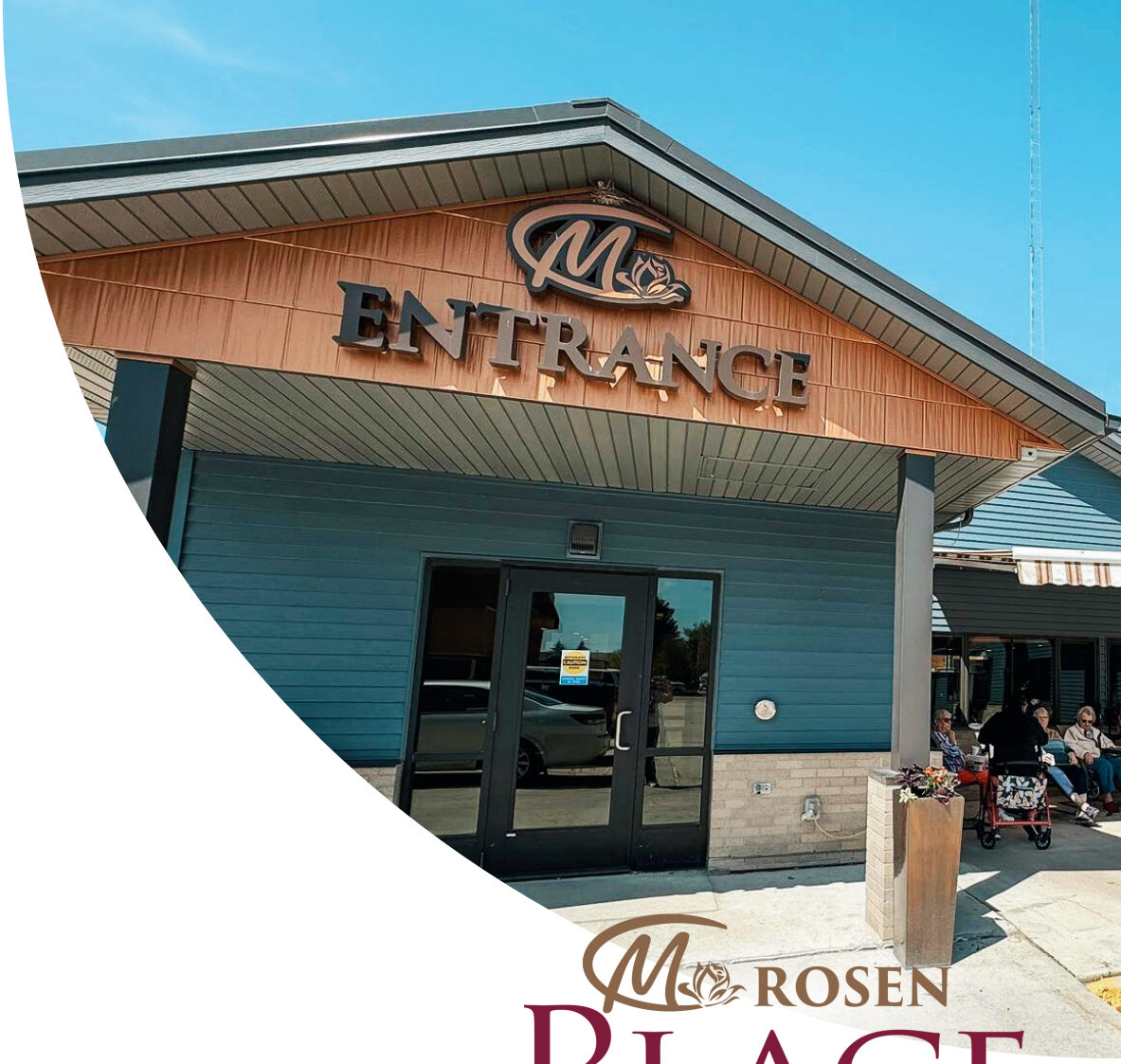
provides essential services for residents of Stanley and Mountrail County as part of Mountrail Bethel Home. Assisted living is an increasingly popular choice for seniors, combining independence with 24/7 personal care. These communities foster social engagement and enhance quality of life compared to unassisted living.

As part of the Mountrail County Health Center, Rosen Place offers a full continuum of care as a Continuing Care Retirement Community (CCRC). Residents enjoy access to amenities connected to Mountrail Bethel Home, the Medical Center, and the Aquatic Center such as:

- **State of the Art Warm Water Therapeutic Indoor Pool**
- **11 Bed Acute Care Hospital**
- **24 Hour Emergency Room Services**
- **14 Exam Room Healthcare Clinic**
- **Full Range of X-Ray and Lab Services**
- **CT Scanner & 3-D Mammography**
- **Physical Therapy Services**



Rosen Place On 8th Assisted Living  
PO Box 700  
607 8th Ave SE  
Stanley, North Dakota 58784



# ROSEN PLACE

ON EIGHTH

-ASSISTED LIVING-

*Many Avenues...  
One Goal...  
Your Health...*



## Our Mission:

To provide residential style accommodations and individualized support services to meet the occupant's needs and abilities to maintain as much independence as possible. Rosen Place on 8th features:

- 9 Single Bedroom Units
- 5 Double Bedroom Units
- 2 Units ADA Compliant



## Services:

The services provided at Rosen Place on 8th include, but are not limited to the following:

- 24/7 Staffed Call System
- Basic Cable and Internet
- Bathing and Dressing Assistance
- Three Meals a Day
- Laundry & Housekeeping Assistance
- Medication Management and Administration
- In Unit Meal Tray Delivery
- In Unit Washer and Dryer
- Lab, Radiology, Hospital and Clinic Services



## Monthly Basic Pricing:

- Occupied 1-Bedroom Unit—\$4,050 for a Single
- Occupied 2-Bedroom Unit—\$4,500 for a Single
- Second Person in a unit is an additional \$1,200 per month
- Rates are subject to change

## Items included in the above base rates:

- In Unit Washer and Dryers
- All Meals in the Dining Room
- Electricity, Heat and City Services
- Light Housekeeping
- Recreational and Social Services
- 24 hour staffed call system
- Basic Cable and Internet

## Tiered Level of Services Beyond Basic Care:

At Rosen Place, you'll find 4 service options:

### Tier 1 – \$400/month

For individuals who are independent with all Activities of Daily Living (ADLs) but benefit from reminders for bathing, dressing, grooming, activities, and meals. Includes all amenities and services.

### Tier 2 – \$800/month

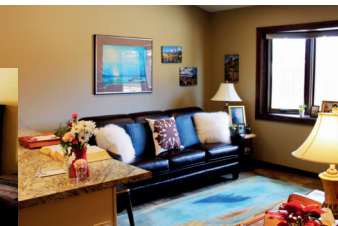
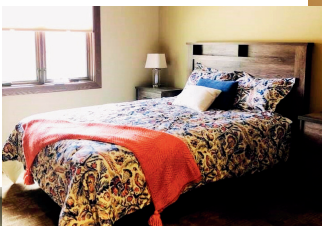
Provides assistance for one ADL, along with support for activities, meals, and all included amenities and services.

### Tier 3 – \$1,200/month

Includes assistance for two ADLs, plus support for activities, meals, and all included amenities and services.

### Tier 4 – \$1,600/month

Offers assistance for three ADLs, as well as support for activities, meals, and all included amenities and services.



Schedule your tour today!

Please contact the Rosen Place on 8th Assisted Living Director for more information.

**Marcie Johnson, MOT, OTR/L**  
Phone: 701-628-8653

